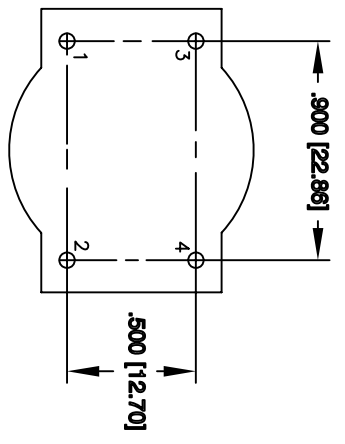
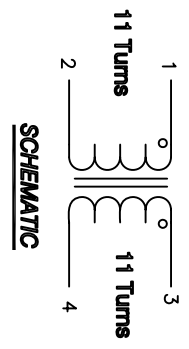
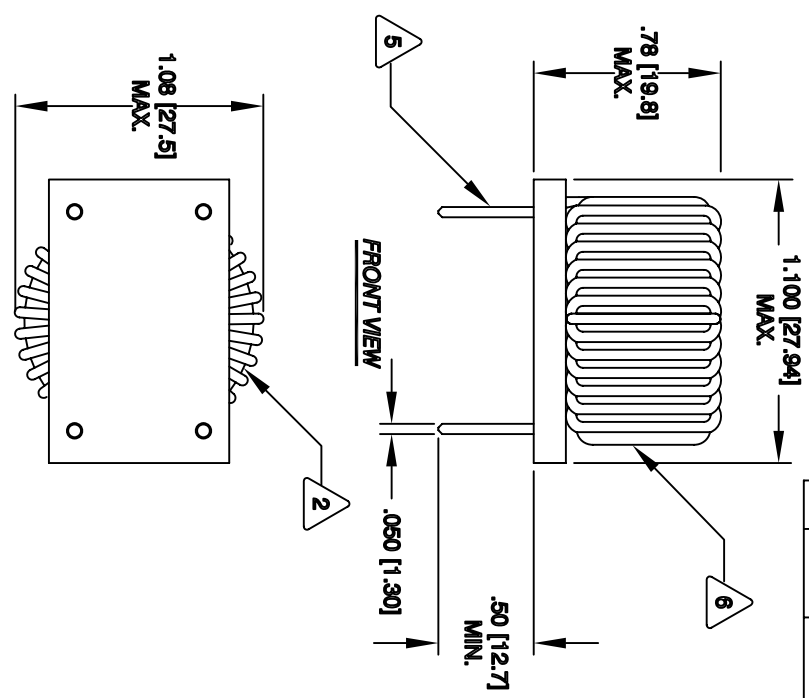


The information contained in this drawing is the sole property of CWS Coil Winding Specialist. Any reproduction in part or whole without written permission of CWS Coil Winding Specialist is prohibited.

| REVISION HISTORY | | SIGN & DATE | | | | |
|------------------|-----|--------------------|-----|----------|------|----------|
| REV | ECN | DESCRIPTION | BY | DATE | CHK | DATE |
| C | | PRODUCTION RELEASE | TDK | 1/04/05 | JLJU | 1/04/05 |
| D | | PRODUCTION RELEASE | GN | 07/23/09 | AM | 07/23/09 |

- 7 BUILT TO ROHS COMPLIANCE
- 6 MARK PART NUMBER AND REVISION IN APPROX TO THE CORE MUST REST FLAT ON PCB, LEADS MUST BE TANGENT FLUSH WITH THE COIL EDGE, AS SHOWN (I.E. COIL REMOVE INSULATION AND TIN LEADS APPROX 0.50 INCH
- 5 CORE AND EVENLY SPACED WIND 11 TURNS, # 16 AWG SINGLE LAYER ON EACH SIDE OF CONSTRUCTION:



- 3 SPECIFICATIONS @ 25°C:
 - APPROVED PART
 - OUTER WRAP: 3M #11 OR #89 OR OTHER CWS WIRE: UL RECOGNIZED 155°C RATING MAGNET WIRE
 - CWS BYTEMARK OR OTHER APPROVED PART
 - CORE: COATED FERRITE TOROID, HIGH PERM MNZN
- 1 SPACER & BOBBIN RATING CLASS B (130°C) REQUIRED MATERIAL: UL RECOGNIZED 94V-0 FOR FLAMMABILITY

NOTES: UNLESS OTHERWISE SPECIFIED, READ FROM BOTTOM UP.

| QTY | CODE IDENT | MFG. P/N | DESCRIPTION | ITEM NO. |
|--|--------------|--|------------------------------------|----------|
| | | | CWS Coil Winding Specialist | |
| PARTS LIST | | | | |
| AUTOCAD SOLIDWORKS X SIGN DATE DRAWN TDK 1/04/05 CHECKED JLJU 1/04/05 ENGR. KSUM 1/04/05 APPR. JLJU 1/04/05 | | | | |
| TITLE: | | Common Mode Choke 1.0 mH, 12 Amps | | |
| SIZE | DWG. NO. | REV | | |
| B | C-B2134-00 | D | | |
| SCALE | NOT TO SCALE | SHEET | 1 | OF 1 |